



G O P A L A N  
**OLYMPIA**  
OFF MYSORE ROAD  
THE SPORTS CITY



## About the developer

Gopalan Enterprises, in the last three decades, has established itself as a standard of quality and trust. The Company commitment to innovation, integrity and customers needs is reflected in its happy customers. With over 10 million square feet of constructed space, Gopalan Enterprises is a leader in its domain.

Gopalan Enterprises has diversified from its initial offering of Residential apartments to Malls, Commercial Spaces, Cinemas, Bowling Alleys, Education (Schools and Colleges), Skill Academies, Organic Farming, Coworks and now Aerospace and Hospitality.

Gopalan Enterprises has constructed more than 6400 residential units in Bangalore-including apartments and row houses. 34 completed projects and 4 under construction make the company one of the largest builders in Bangalore.



**66**  
Projects Built



**6402**  
Residential Units



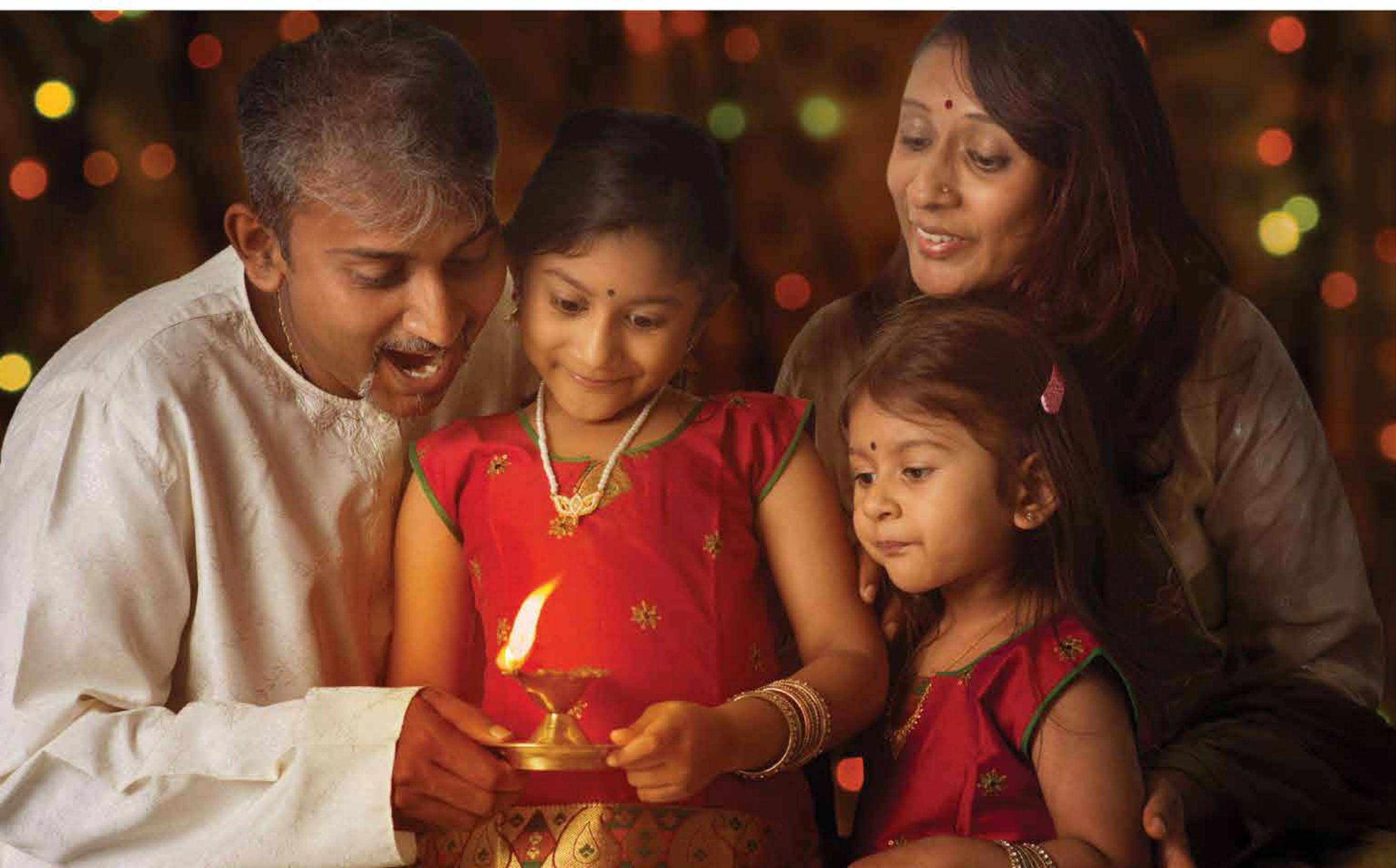
**1.6 mn sqft**  
Retail Space



**4 mn sqft**  
Commercial Space



**10 mn sqft**  
Under Construction



## Awards & Recognitions

- 2015 Lifetime Achievement Award - Global Real Estate Brand Awards
- 2015 Best Residential Project - CNBC Awaaz
- 2017 Best Commercial Project - Construction Times
- 2018 Affordable Housing Project - International Brand Equity (Goa)
- 2018 Affordable Housing Project - Quikr (Bangalore)
- 2018 Asia's Best Brands - Asia One Awards (Singapore)
- 2018 Premium Housing Project of the Year - ETNow (Mumbai)

## Testimonials



**Pratap Kanna**  
Flat A-502

I have booked a flat in Gopalan Olympia. The staff were very supportive and give you information or details about the project regardless how many times you ask for. The project is too good when compared to leading builder in terms of planning, amenities, quality of fittings etc. The project is also located in a very commutable location to major places in the city. I would definitely suggested to anyone looking for a flat in particular range.



We are happy to be a part of Gopalan Olympia. We appreciate the construction. We fell in love with space and ventilation of the property. Best of luck.

**V. Sundara Mahalingam & S. Meenarani**  
Flat I-1006



GOPALAN  
**OLYMPIA**  
OFF MYSORE ROAD  
THE SPORTS CITY

Olympia, in the Greek world, was an ode to Lord Zeus, King of the Greek Gods. An intricate melange of serenity and natural beauty, Olympia became a hub for sports and culture-a hub that influences the world from prehistoric times till date.

From this exceptional testimony to quality and timelessness and its focus on encouraging fitness of mind and spirit, Gopalan Enterprises presents Gopalan Olympia - An Arcadia that encourages you to find time for yourself and your body, vast open spaces that invite you to reconnect with nature and contemporary luxuries that soften your journey.

At Olympia, it's not about winning a game, it's about feeling one with the game.



GOPALAN  
**OLYMPIA**  
 OFF MYSORE ROAD  
 THE SPORTS CITY

Master plan

- |                          |                   |                           |
|--------------------------|-------------------|---------------------------|
| 1 Cricket Practice Net   | 6 Football Court  | 11 Elders Seating         |
| 2 Elders Seating Pergola | 7 Swimming Pool   | 12 Senior Citizen's Plaza |
| 3 Elders Seating         | 8 Tennis Court    | 13 Yoga & Meditation      |
| 4 Kids Play Area         | 9 Badminton Court | 14 Children's Play Area   |
| 5 Outdoor Exercise Area  | 10 Club House     | 15 Services               |



G O P A L A N  
**OLYMPIA**  
OFF MYSORE ROAD  
THE SPORTS CITY

## Football

A full fledged football field so that your evenings are spent watching your child perfect his/her sport while you get extra time for you.



GOPALAN  
**OLYMPIA**  
OFF MYSORE ROAD  
THE SPORTS CITY

## Tennis

Take advantage of the multiple tennis courts on the clubhouse rooftop. Ace up and get set to fine tune that forehand, backhand, volley and break!



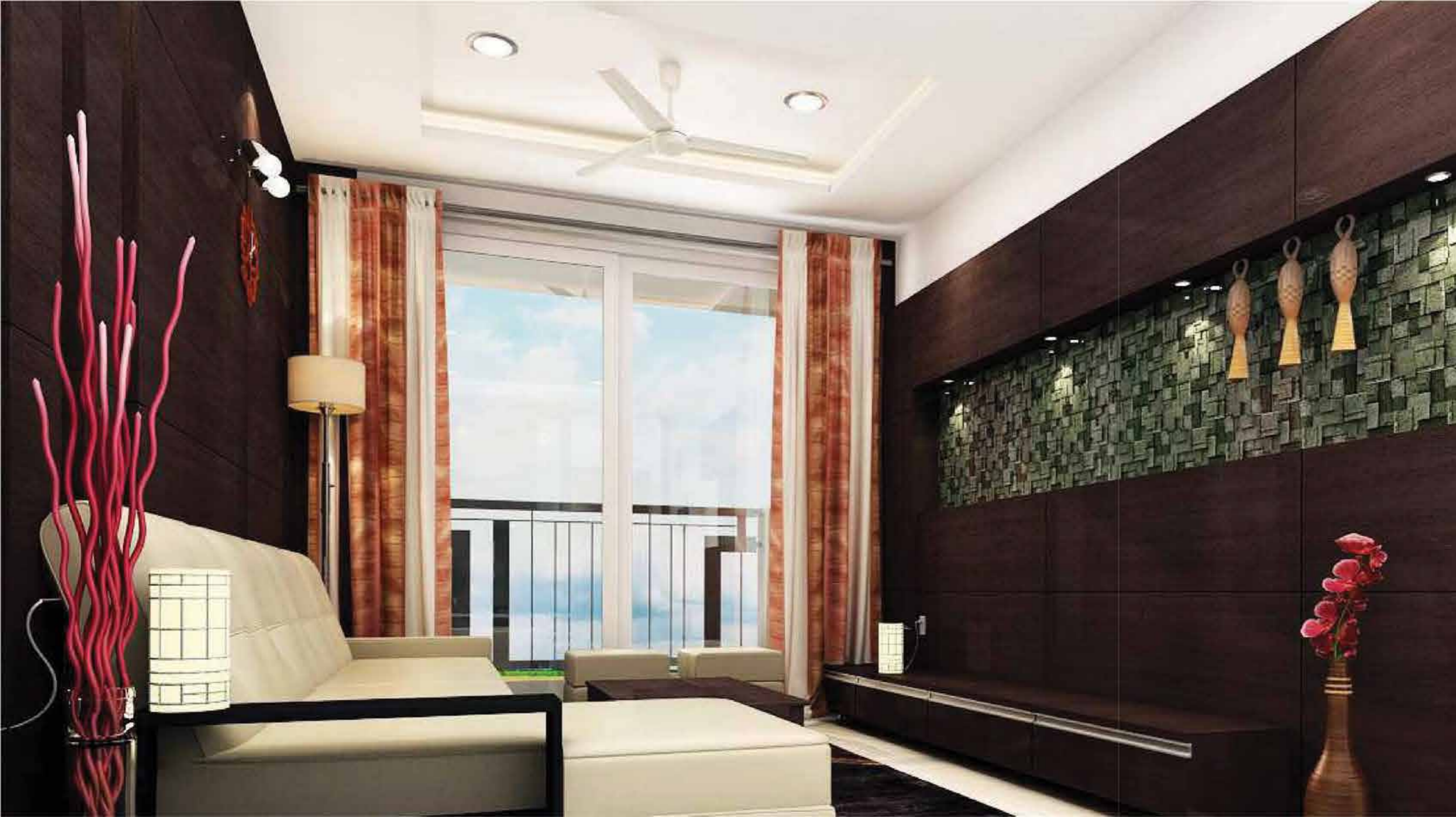


GOPALAN  
**OLYMPIA**  
OFF MYSORE ROAD  
THE SPORTS CITY

## The Lifestyle You Dream of

Options ranging from 2 bedrooms to 3 bedrooms, and multiple floor plans, Gopalan Olympia caters to different lifestyle needs of different residents. From Sports to shopping, from peaceful walkways to zen like meditation centres, the project blends style with fun to make homes that promise a lifetime of happy moments..





GOPALAN  
**OLYMPIA**  
OFF MYSORE ROAD  
THE SPORTS CITY

## Living Room

Wide, airy, well lit living rooms that are inviting and friendly, make your home a place you look forward to coming back to each day.



**BLOCK - I**  
G+ 13 FLOORS



Typical Floor Key Plan

**2 BED ROOM APARTMENT**



**2 BED ROOM APARTMENT - Level 1 to Level 13**

- AREA - SBUA : 980 SQ. FT. (CA : 698 SQ. FT.)
- SBUA : 985 SQ. FT. (CA : 699 SQ. FT.)
- SBUA : 1020 SQ. FT. (CA : 720 SQ. FT.)
- SBUA : 1030 SQ. FT. (CA : 729 SQ. FT.)

**BLOCK - C**  
G+ 13 FLOORS



Typical Floor Key Plan

**3 BEDROOM APARTMENT**



**3 BEDROOM APARTMENT - Level 1 to Level 13**

- AREA - SBUA : 1360 SQ. FT. (CA : 959 SQ. FT.)

Disclaimer: 1. All dimensions are in metric, measured to wall finishes. 2. All materials, dimensions & drawings are approximate. 3. Information is subject to changes without notice, at developer's absolute discretion. 4. Actual area may vary from the stated area. 5. Drawings are not to scale. 6. All images used are for illustrative purposes only and do not represent the actual size, features, specifications, fittings and furnishings. 7. The developer reserves the right to make revisions / alterations at it's absolute discretion.

Disclaimer: 1. All dimensions are in metric, measured to wall finishes. 2. All materials, dimensions & drawings are approximate. 3. Information is subject to changes without notice, at developer's absolute discretion. 4. Actual area may vary from the stated area. 5. Drawings are not to scale. 6. All images used are for illustrative purposes only and do not represent the actual size, features, specifications, fittings and furnishings. 7. The developer reserves the right to make revisions / alterations at it's absolute discretion.

GOPALAN  
**OLYMPIA**  
OFF MYSORE ROAD  
THE SPORTS CITY

## Kitchen

Spaces that turn cooking into an art and a chore to a hobby, these kitchens are crafted to perfect your skills with maximum ease and sheer practicality and dollops of fun.





GOPALAN  
**OLYMPIA**  
OFF MYSORE ROAD  
THE SPORTS CITY

## Master Bedroom

Be yourself, relax and rejuvenate in your personal space. Let the verdant outdoors soothe your mind and the luxury inside pamper you.



Homes that Invigorate  
body and soul





GOPALAN  
**OLYMPIA**  
OFF MYSORE ROAD  
THE SPORTS CITY

## Harmony and Serenity

"In the grey summer garden I shall find you  
With day-break and the morning hills behind you.  
There will be rain-wet roses; stir of wings;  
And down the wood a thrush that wakes and sings.  
Not from the past you'll come, but from that deep  
Where beauty murmurs to the soul asleep:  
And I shall know the sense of life re-born  
From dreams into the mystery of morn  
Where gloom and brightness meet. And standing there  
Till that calm song is done, at last we'll share  
The league-spread, quiring symphonies that are  
Joy in the world, and peace, and dawn's one star"

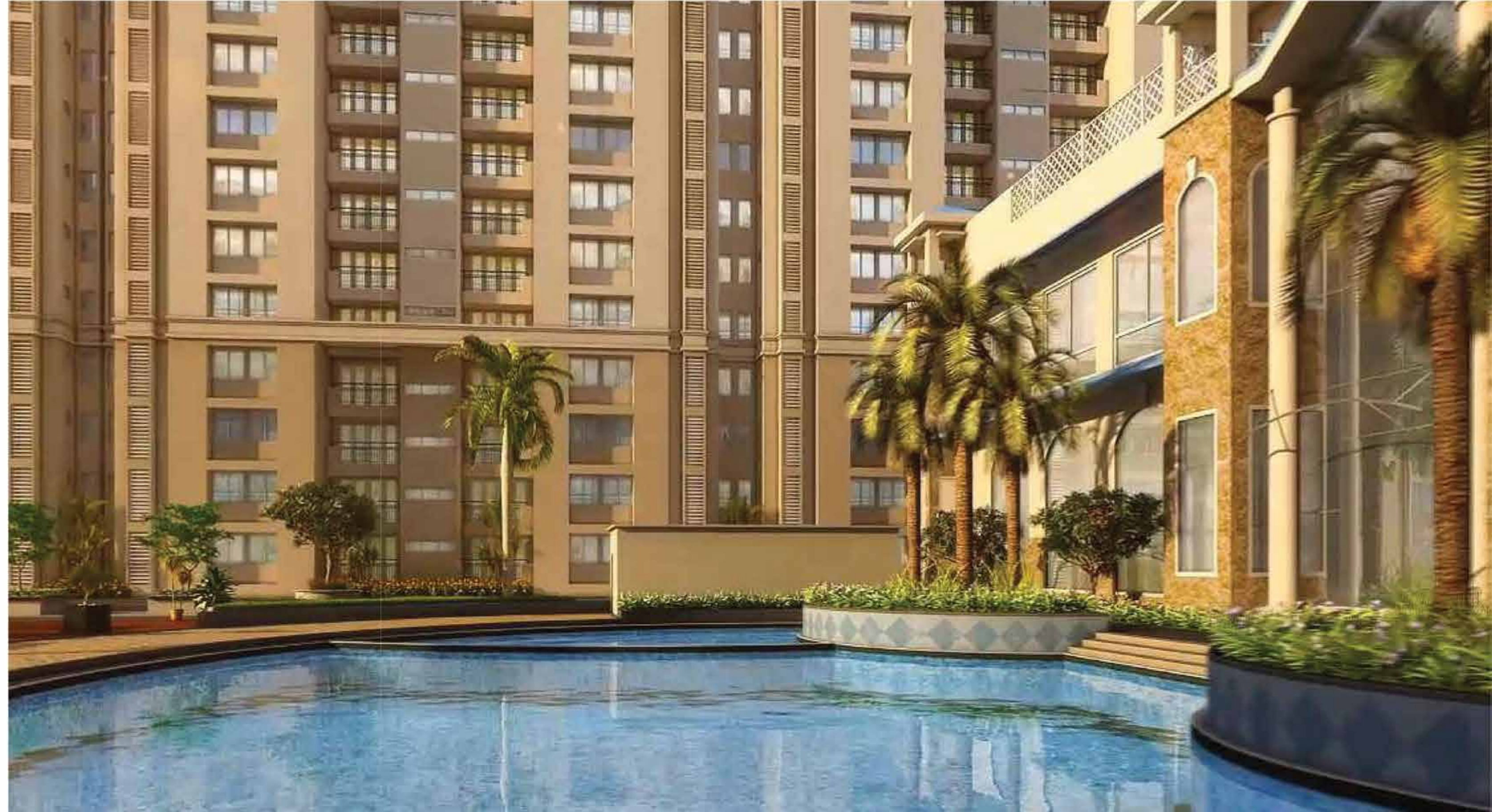
- Siegfried Sassoon





## CLUB Life @ Arcadia

The 60,000 square feet clubhouse replete with every comfort and convenience that can make home that haven that you seek. From a departmental store to saloon, a yoga room to a library, kids centre, bowling alley and even a mini theatre to unwind, Arcadia makes sure you dont need to step out into the traffic. Stroll, chat, get fit or softly unwind





GOPALAN  
**OLYMPIA**  
OFF MYSORE ROAD  
THE SPORTS CITY

## Ready...Get Set....Relax

This Ready to Move-in home of your aspirations awaits you. Designed with your preferences in mind, your convenience at your doorstep, your leisure a priority, your fitness our goal, Gopalan Olympia presents a home that delights you.



Football



Basket Ball



Gym



Billiards



Jogging Track



Lawn Tennis



Yoga Center



Table Tennis



Swimming Pool



Bowling



Kid's Play Area



Spa



Badminton



Mini Theater



Library



Cricket



**GOPALAN OLYMPIA**  
OFF MYSORE ROAD  
THE SPORTS CITY

**2 MINUTES**  
Gopalan National School (south)

**5 MINUTES**  
Rajarajeswari Dental college and Hospital

**10 MINUTES**  
NICE Road Kengeri Road Junction

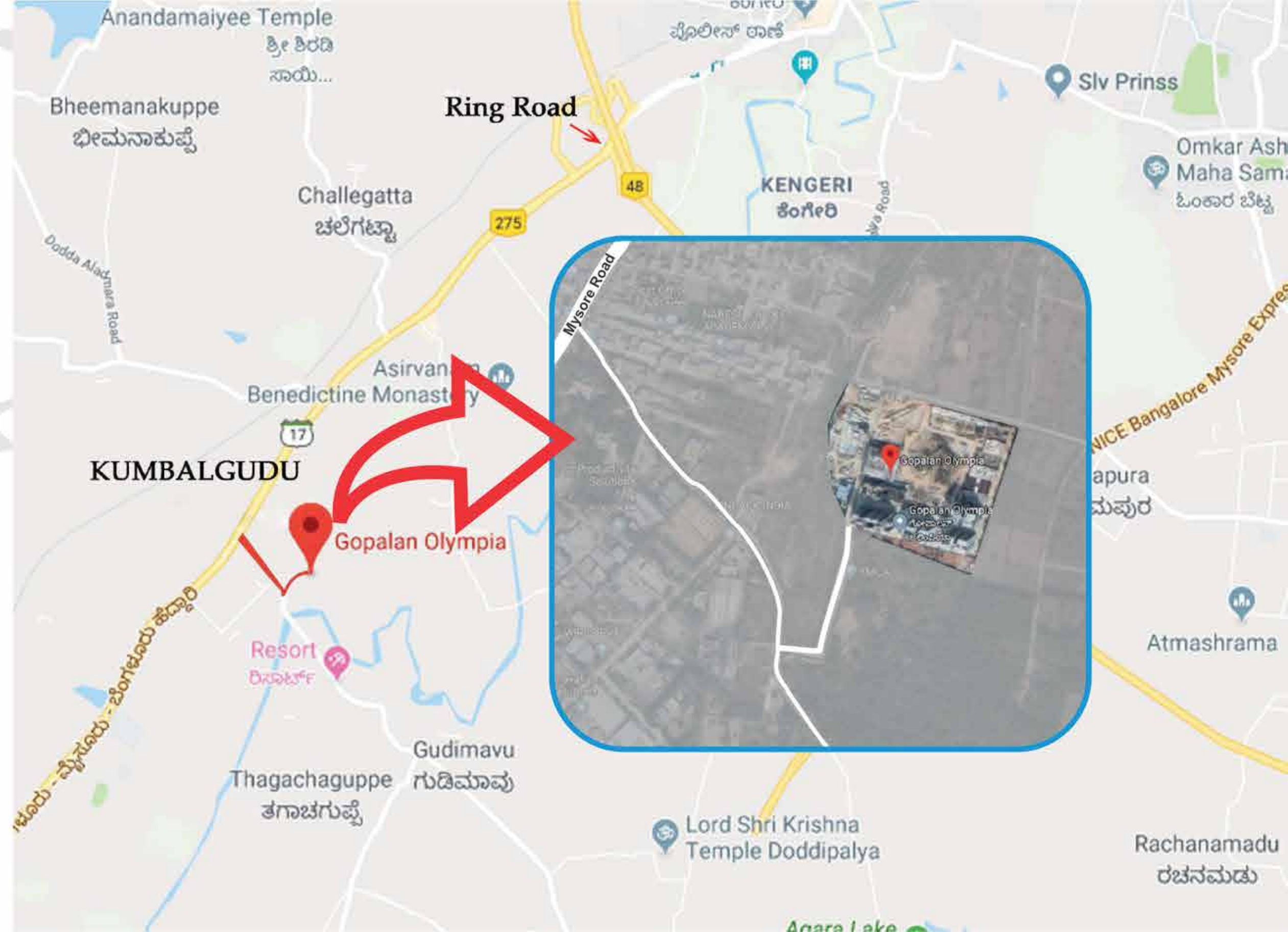
**10 MINUTES**  
Kengeri Metro Station

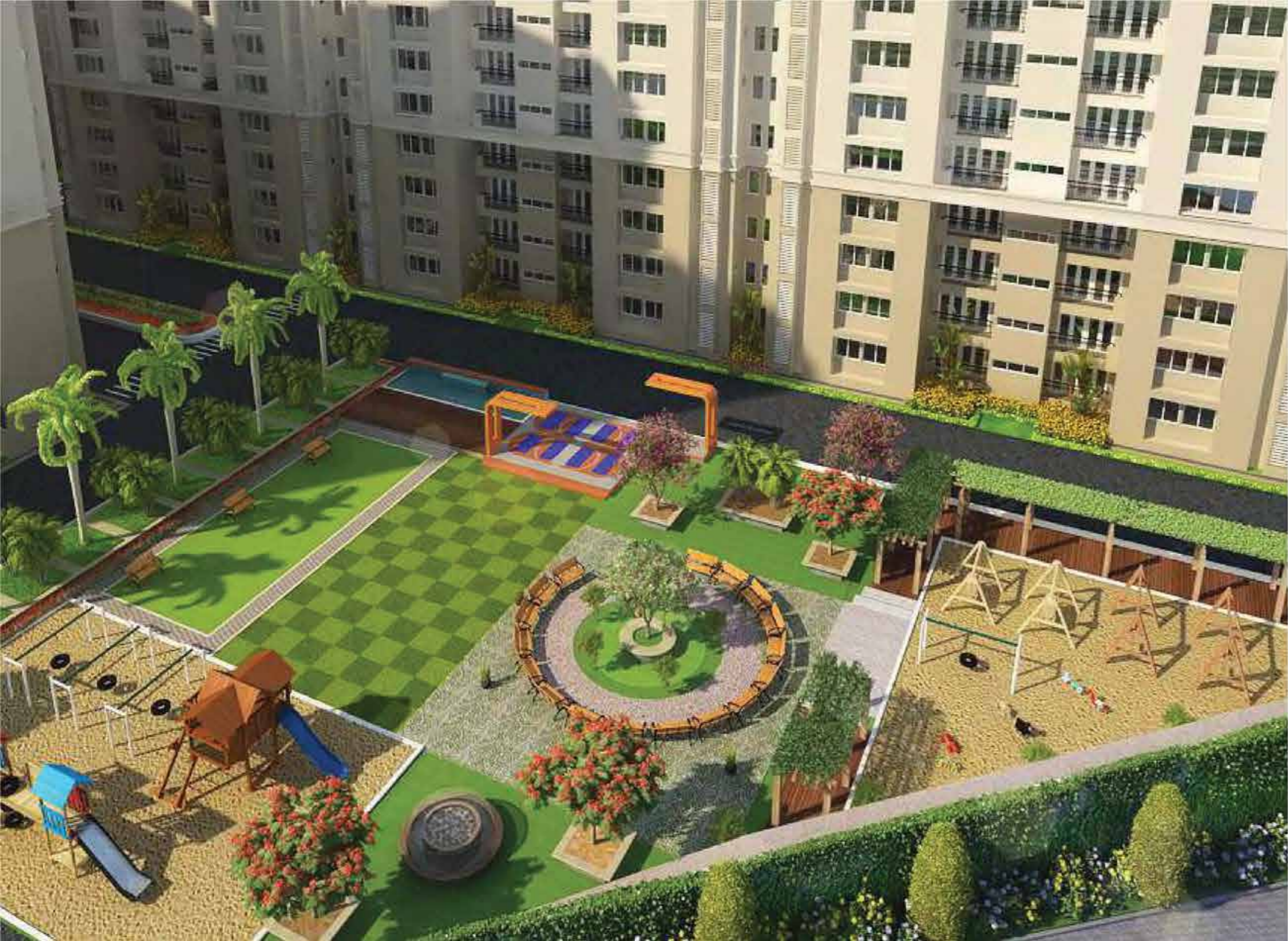
**22 MINUTES**  
The Eagleton Golf Course

**22 MINUTES**  
Gopalan Arcade Mall

**23 MINUTES**  
Global Village

**27 MINUTES**  
Bangalore University Campus





## Specifications

### STRUCTURE

- » Basement + Ground + 13 storied RCC Slab & Shear walls

### CAR PARKING

- » Covered car parks in basement level
- » Visitors' car parks on ground level

### FOYER/LIVING/DINING /BEDROOMS

- » Superior quality vitrified tile flooring and skirting

### PAINTS

- » Plastic emulsion for interiors
- » Weather proofed acrylic emulsion for exteriors

### TOILETS

- » Superior quality ceramic for wall tiling up to ceiling height.
- » Superior quality ceramic for floor

### KITCHEN

- » Superior quality vitrified tile flooring
- » Superior quality ceramic tiling dado 2'-0" above platform
- » Stainless steel single bowl sink with drain board in utility

### BALCONIES/UTILITIES

- » Superior quality ceramic tile flooring and skirting
- » Mild steel handrail

### LOBBY /STAIRCASE

- » Granites for flooring treads & risers
- » Texture finish for walls
- » Mild steel handrail

### COMMON AREAS

- » Granite / equivalent flooring
- » Superior quality ceramic tile cladding up to ceiling
- » Plastic emulsion for ceiling

### JOINERY

- » Main door and bedroom doors of both sides masonite skin with Timber frame & architraves
- » Toilet door of timber frame and architraves. Shutter with Masonite skin on the external side and laminate on the internal side
- » High quality ironmongery and fittings for all doors
- » Heavy-duty aluminium windows made from specially designed and manufactured sections

### LIFTS

- » Total no. of 40 lifts of reputed make
- » Capacity - 20 no's of 13 passengers & 20 no's of 13 passengers

### LANDSCAPE

- » Designer landscaping

### COMMON FACILITIES

- » Well-equipped clubhouse
- » Swimming pool
- » Children's play area

### PLUMBING & SANITARY

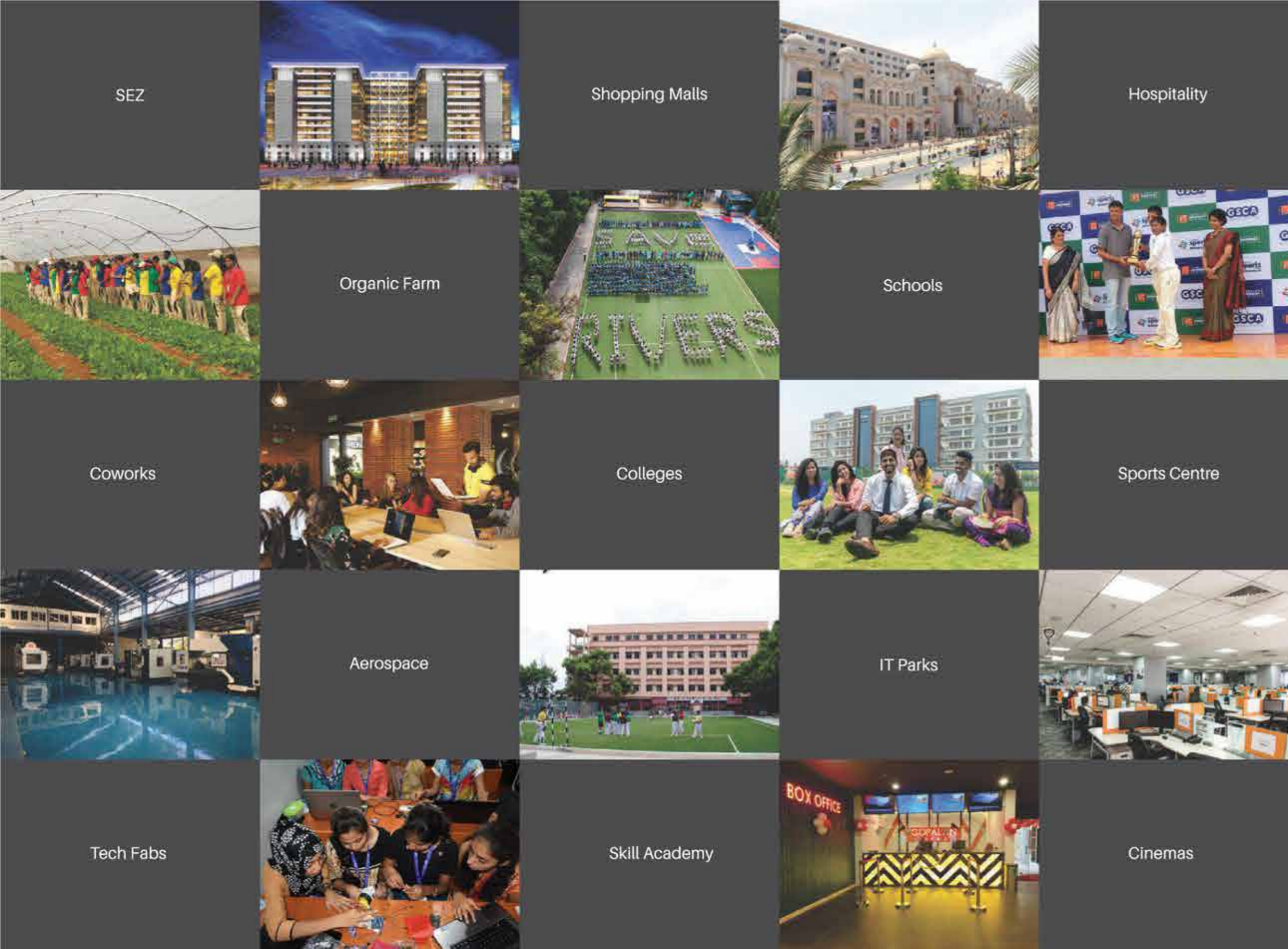
- » Sanitary fixtures of reputed make in all toilets
- » Chromium plated fittings of reputed make in all toilets

### ELECTRICAL SPECIFICATIONS

- » BESCOM power supply of three phase 5 Kilo Watt per flat
- » Stand by power (Generator back-up) of Kilo Watts for each unit
- » 100% stand by power (Generator back-up) common facilities
- » Provision for AC in bedrooms
- » Intercom facility provided from security cabin to each apartment

#### Specification Disclaimer

The views shown are artist's impression only. | The size, shape, and position of doors / windows, columns, design of railings and various other elements are subject to change. | The furniture / fixtures, including counter in kitchen, is shown to indicate the space available and likely position of electrical points are not a part of standard specifications. | The finishes - flooring, tiles in toilet, kitchen, utility, balconies, etc., paint colour, door finish / colour and any other finishes are only indicative and are subject to change. | The dimensions and areas shown are from block to block, without considering any plaster & finish. Gopalan Enterprises reserves the right to change specifications without prior notice, in the interests of quality and timely delivery. We request our valuable customers to note that any such changes made will not, in any way, be detrimental to the quality of the building.



## The Team With the Highest Standards

As a dynamic and vibrant team of design and construction professionals, Gopalan Group brings an acute awareness of the importance of quality, safety, community and environment to every project.

Gopalan's track record over the past decade includes Award-winning projects and successful delivery of quality residential, commercial and retail projects.

The highly qualified leadership team and its trusted allies in the architecture, planning and trade domains approach every project with the aim of creating a place where those who live and work in can take pride in.

Gopalan listens to the market and its clients and operates with an openness and transparency that ensures a sense of cooperation and mutual focus on the desired outcome

Through meticulous project planning and scheduling Gopalan ensures that the quality of workmanship is impeccable and that the end result is one that enriches the urban environment and has lasting value.

